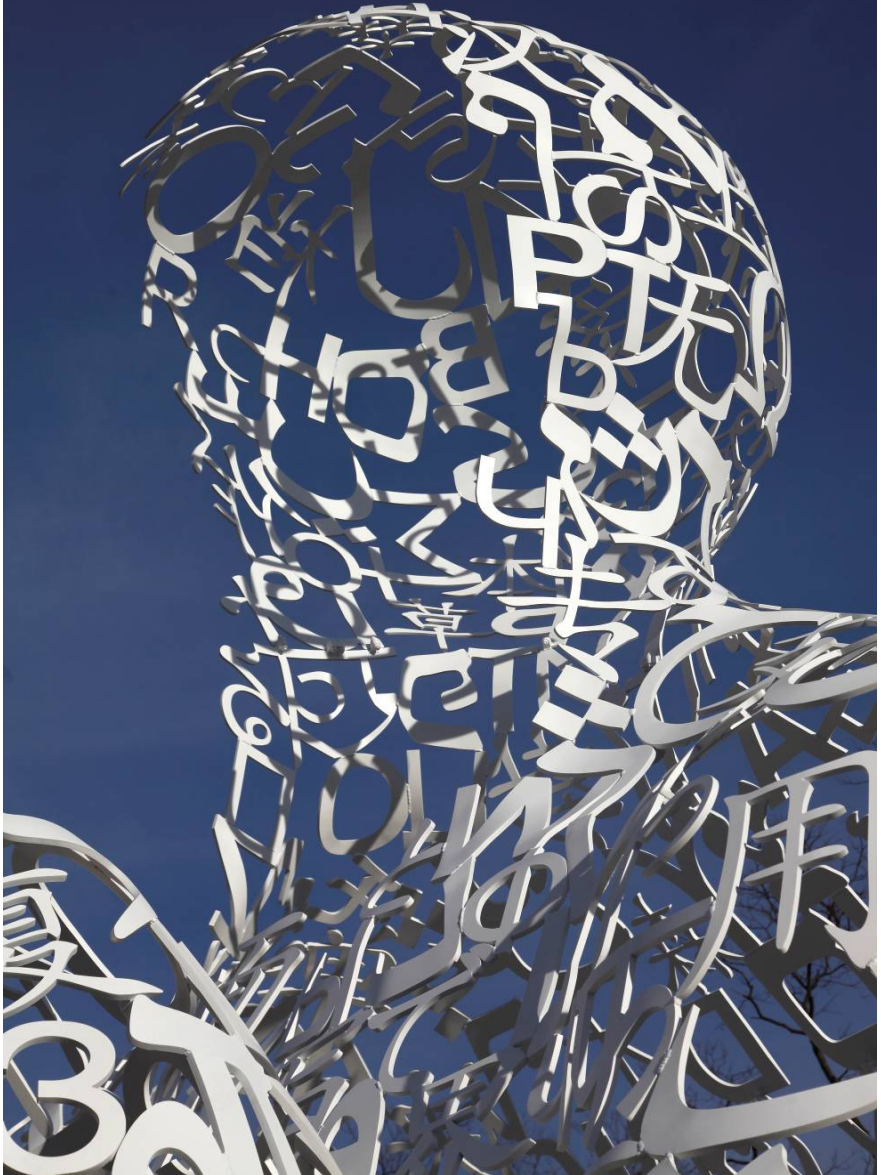




Anatomische Gesellschaft

107th Annual Meeting

Frankfurt am Main | March 23-26, 2012



Programme of the 107th Annual Meeting

March 23 – 26, 2012 | Frankfurt am Main, Germany

Main Topic I

Rhythms and Oscillations in Living Tissues: Networks - Cells - Genes

Main Topic II

Regeneration and Remodelling of Living Tissues

Papers and Posters from all Branches of Anatomy

Meeting Place

Goethe-Universität Frankfurt
Lecture Hall Center, Campus Westend

Leopoldina-Symposium

March 22-24, 2012

Lecture Hall 3, Campus Westend

Opening Ceremony

Friday, **March 23, 2012** | 18:00
Lecture Hall 3, Campus Westend

Welcome Reception and Get-Together Party

Friday, **March 23, 2012** | 20:00
Saal West, Campus Westend

General Assembly

Saturday, **March 24, 2012** | 17:00 - 19:00
Lecture Hall 3, Campus Westend

Reception by the Lord Mayor

Saturday, **March 24, 2012** | 19:30 - 22:30
Kaisersaal of the Römer

Banquet at the Senckenberg Museum

Sunday, **March 25, 2012** | 19:30

Friday, March 23, 2012

Lecture Hall 3

Leopoldina Symposium Circadian System

09:00 – 17:30

Chairs: Joe Takahashi, Paul Pévet, David C. Klein

- 09:00 - 09:15** **Opening Remarks**
Detlev Drenckhahn, Senator of the Leopoldina, Würzburg (Germany)
Jürgen Schölmerich, Medical Director, University Hospital Frankfurt, Frankfurt am Main (Germany)
- 09:15 - 10:00** **Hitoshi Okamura, Kyoto (Japan)**
Molecular dissection of the circadian clock in health and disease
- 10:00 - 10:45** **David C. Klein, Bethesda (USA)**
Circadian biology and next generation sequencing
- 10:45 - 11:30** **Jo Arendt, Guildford (United Kingdom)**
Melatonin: clock, calendar and chronobiotic
- 11:30 - 11:45** COFFEE BREAK
- 11:45 - 12:30** **Paul Pévet, Strasbourg (France)**
The SCN-endocrine outputs in the multi-oscillatory circadian network
- 12:30 - 13:15** **Takashi Yoshimura, Nagoya (Japan)**
Mechanism of seasonal time measurement in vertebrates
- 13:15 - 13:45** LUNCH

13:45 - 14:30

Till Roenneberg, München (Germany)

Social biology of timing

14:30 - 15:15

Jan Born, Lübeck, Tübingen (Germany)

The memory function of sleep

15:15 - 15:45

Francis Levi, Villejuif (France)

Personalized cancer chronotherapeutics

15:45 - 16:00

COFFEE BREAK

16:00 - 17:30

**Christian A. Kell , Lorenzo Cordani , Christian Hassemer,
Joerg Stehle, Frankfurt am Main (Germany)**

How time of day affects brain function: Diurnal network dynamics underlying stability of visual perception and interindividual variability in locomotion

Tiphaine Mannic, Daniel Sage, Patrick Salmon, Jacques Philippe, Michael Unser, Philippe Halban, Domenico Bosco, Christoph Bauer, Charna Dibner, Geneva (Switzerland)

Robust circadian clocks are ticking in beta and non-beta cells of human pancreatic islets

R. Ruhi, Raipur (India)

Circadian rhythm in rest activity of cancer patients

Posters

18:00

Opening Ceremony of the 107. Annual Meeting

20:00

Get-Together Party

Opening Ceremony 18:00

Prelude

Words of Welcome

Prof. Dr. med. Tobias M. Böckers, Ulm
President of the Anatomische Gesellschaft

Prof. Dr. med. Werner Müller-Esterl
President of the Goethe-University, Frankfurt am Main

Prof. Dr. med. Josef Pfeilschifter
Dean of the Medical Faculty of the Goethe-University, Frankfurt am Main

Opening Lecture

Prof. Dr. med. Tobias M. Böckers, Ulm

Wolfgang Bargmann-Preis

Lecture(s) of Laureate(s)

Anton-Waldeyer-Preis

Finale

Welcome Reception and Get-Together 20:00

Chair: Hitoshi Okamura, Horst-Werner Korf

- 09:00 - 09:45 1 **Takahashi J.S., Dallas (USA)**
Clock genes, clock cells and clock networks in the mammalian circadian system
- 09:45 - 10:30 2 **Foster R. G., Oxford (United Kingdom)**
Sensing light and time using novel photoreceptors
- 10:30 - 10:45 3
- 10:45 - 11:00 4 **Rune G., Zhou L., Noshari S., Behem C., de Vreese X., Hamburg (Germany)**
Estrogen receptor-mediated hippocampal spine synapse formation is modulated by estrus cyclicity of hippocampal estradiol synthesis

11:00 - 11:30 COFFEE BREAK

Chair: Russell Foster, Jörg Stehle

- 11:30 - 11:45 5 **von Gall C., Prokopiak M., Christ E., Korf H.-W., Düsseldorf, Frankfurt am Main (Germany)**
Mice deficient for the clock protein BMAL1 show impaired adult neurogenesis
- 11:45 - 12:00 6 **Yasuo S., Unfried C., Bojunga J., Iigo M., Otsuka T., Togo Y., Schreiber Y., Geisslinger G., Korf H.-W., Frankfurt am Main (Germany), Fukuoka, Utsunomiya (Japan)**
Sensitizing effects of 2-arachidonoylglycerol in hypophysis and hypothalamus of mammals

- 12:00 - 12:15** 7 **Pfeffer M., Korf H.-W., von Gall C., Frankfurt am Main, Düsseldorf (Germany)**
Melatonin facilitates reentrainment of the circadian system to light-induced phase advances by acting upon mt2 receptors
- 12:15 - 12:30** 8 **Kunst S., Wengert A., Grether M., Hölter P., Wolloscheck T., Sticht C., Wolfrum U., Spessert R., Mainz, Mannheim (Germany)**
New light on the transcriptional basis of photoreceptor adaptation
- 12:30 - 12:45** 9 **Hölter P., Kunst S., Wolloscheck T., Kelleher D., Sticht C., Wolfrum U., Spessert R., Mainz, Mannheim (Germany)**
The retinal clock drives the expression of *kcny2*, a channel essential for visual function and cone survival
- 12:45 - 13:00** 10 **Maronde E., Frankfurt am Main (Germany)**
The clock genes *period 2* and *cryptochrome 2* differentially balance bone formation
- 13:00 - 13:45 LUNCH
- 13:45 - 15:15** **Poster Session I**
Atrium

Chair: Wolfgang Kummer, Friedrich Paulsen

- | | | |
|----------------------|----|--|
| 15:15 - 15:30 | 11 | <p>Hartlieb E., Spindler V., Waschke J., Munich (Germany)
Desmoglein 2 and 3 differently regulate p38mapk and keratinocyte cohesion</p> |
| 15:30 - 15:45 | 12 | <p>Fuchshofer R., Kessel S., Junglas B., Tamm E., Regensburg (Germany)
Regulation of connective tissue growth factor expression in human trabecular meshwork cells</p> |
| 15:45 - 16:00 | 13 | <p>Saritas T., Paliege A., McCormick J., Borschewski A., Dathe C., Himmerkus N., Bleich C., Ellison D., Mutig K., Bachmann S., Berlin, Kiel (Germany), Portland (USA)
Roles of spak and osr1 for the activation of renal distal na(k)cl-cotransporters by vasopressin</p> |
| 16:00 - 16:15 | 14 | <p>Röschel T., Dathe C., Andree C., Schunck W., Bachmann S., Paliege A., Berlin (Germany)
Vasopressin activates soluble epoxide hydrolase in the renal medulla</p> |
| 16:15 - 16:30 | 15 | <p>Singer B., Muturi H., Dreesen J., Jastrow H., Ergün S., Essen (Germany)
Characterization of the ceacam expression and function in tumor derived microvesicles</p> |
| 16:30 - 17:00 | 16 | <p>Paysan J., München (Germany)
Elyra: superresolution microscopy by Carl Zeiss</p> |
| 17:00 - 19:00 | | General Assembly of the Anatomische Gesellschaft |
| 19:30 - 22:30 | | <p>Reception by the Lord Mayor
Kaisersaal of the Römer</p> |

Chair: Beate Brand-Saberi, Christoph Viebahn

- | | | |
|---------------|----|---|
| 12:00 - 12:15 | 17 | <p>Pröls F., Schmalhaus C., Zhou L., Kruse C., Morcinek K., Rune G., Hamburg, Köln (Germany)</p> <p>Reelin synthesis in the reproductive tract</p> |
| 12:15 - 12:30 | 18 | <p>Kweider N., Fragoulis A., Rosen C., Pecks U., Rath W., Pufe T., Wruck C., Aachen (Germany)</p> <p>Can the activation of Nrf2 help in preeclampsia?</p> |
| 12:30 - 12:45 | 19 | <p>Buck V., Flensburg F., Leube R., Hombach-Klonisch S., Gellersen B., Classen-Linke I., Aachen, Hamburg (Germany), Manitoba (Canada)</p> <p>Lateral cell-cell adhesion of endometrial epithelial cells - establishment of in vitro systems for the examination of hormone-dependent redistribution of junctional complexes and interaction with trophoblast cells</p> |
| 12:45 - 13:00 | 20 | <p>Stammler A., Konrad L., Wittlif L., Thong A., Middendorff R., Gießen (Germany)</p> <p>Regulation of permeability of the epididymal epithelium by Tgf-beta</p> |
| 13:00 - 13:45 | | LUNCH |
| 13:45 - 15:15 | | <p>Poster Session I</p> <p>Atrium</p> |

Chair: Gabriele Rune, Kerstin Krieglstein

- 15:15 - 15:30 21 **Fragoulis A., Henschenmacher B., Rosen C., Siegl S., Zhou L., Rune G., Pufe T., Wruck C., Aachen, Hamburg (Germany)**
Role of Nrf2 in the aging brain
- 15:30 - 15:45 22 **Ahlemeyer B., Gottwald M., Baumgart-Vogt E., Gießen (Germany)**
Deletion of a single allele of the pex11beta gene is sufficient to cause oxidative stress, delayed differentiation and neuronal death in the mouse brain
- 15:45 - 16:00 23 **Rüb U., Seidel K., Korf H.-W., Frankfurt am Main (Germany)**
Degeneration of the cerebellum in Huntington's disease
- 16:00 - 16:15 24 **Rudolph A., Schmitt O., Wree A., Haas S., Rostock (Germany)**
Long-term characterization of the 6-hydroxydopamine hemiparkinson mouse-model
- 16:15 - 16:30 25 **Schütz B., Ringer C., Eiden L., Weihe E., Marburg (Germany), Bethesda (USA)**
Pacap-deficiency extends survival and causes a switch of microglial phenotype in the Sod1(g93a) mouse model of amyotrophic lateral sclerosis
- 17:00 - 19:00 **General Assembly of the Anatomische Gesellschaft**
Lecture Hall 3
- 19:30 - 22:30 **Reception by the Lord Mayor**
Kaisersaal of the Römer

- P1 **Noichl E., Reinke H., Korf H.-W., von Gall C., Frankfurt am Main, Düsseldorf (Germany)**
Characterization of heat shock factor 1-immunopositive neurons in the hypothalamus of C3H mice
- P2 **Fischer C., Christ E., Korf H.-W., von Gall C., Frankfurt am Main, Düsseldorf (Germany)**
Tafa3 is expressed in the mouse pars tuberalis and is affected by melatonin 1 receptor deficiency
- P3 **Berishvili G., Shved N., Link K., DCotta H., Baroiller J., Reinecke M., Eppler E., Zurich (Switzerland), Montpellier (France)**
Salinity changes affect the brain-pituitary-gonad axis of tilapia
- P4 **Schomerus C., Nold J., Korf H.-W., Laedtke E., Frankfurt am Main (Germany)**
Colocalization of the cannabinoid receptor 1 and NO-synthase in folliculo-stellate cells
- P5 **Kröher N., Korf H.-W., Wicht H., Frankfurt am Main (Germany)**
Some observations on the hypophyseal pars tuberalis in mice
- P6 **Zamfir C., Zugun E., Folescu R., Cojocaru E., Tocan L., Iasi, Timisoara (Romania)**
Morphometric monitoring of renal structure reactivity during intermittent light exposure as an oxidative stress condition
- P7 **Wittenmayer N., Angermüller S., Dresbach T., Göttingen, Heidelberg (Germany)**
Using photooxidation to visualize synaptic proteins
- P8 **Namm A., Arend A., Aunapuu M., Tartu (Estonia)**
Involvement of Bmp-2 and Bmp-4 in neurogenesis in the human embryo

- p9 **Ohlmann A., Tembei K F., Reber S., Neumann I., Tamm E., Regensburg (Germany)**
Acute psychosocial stress protects against light-induced damage of photoreceptors via a corticosterone-mediated activation of the akt pathway
- P10 **Eiberger B., Tress O., Markopoulos C., Schilling K., Bonn (Germany)**
Functional micro RNAs are necessary for cerebellar granule cell development
- P11 **Vnencak M., Jedlicka P., Owen M., Tschäpe J., Hick M., Müller U., Deller T., Frankfurt am Main, Heidelberg (Germany)**
Functional properties of the dentate gyrus of mice lacking APP or APLP1 - an electrophysiological in vivo study
- P12 **Cuntz H., Mathy A., Häusser M., Frankfurt am Main (Germany), London (United Kingdom)**
A power law for dendritic wiring
- P13 **Jedlicka P., Vnencak M., Jungenitz T., Deller T., Brose N., Schwarzacher S., Frankfurt am Main, Göttingen (Germany)**
The cell adhesion molecule neuroligin-1 is essential for intact excitatory synaptic transmission at glutamatergic perforant path synapses
- P14 **Weiland J., Deller T., Del Turco D., Frankfurt am Main (Germany)**
Validation of suitable reference genes for accurate normalization of reverse transcription quantitative real-time PCR data in mouse hippocampus after entorhinal cortex lesion

- P15 **Dräger D., Holzmann C., Hawlitschka A., Mix E., Benecke R., Wree A., Rostock (Germany)**
Changes in basal ganglia morphology and behaviour in wistar rats after bilateral intrastriatal application of Botulinum toxin A
- P16 **Gromann A., Engelhardt M., Vorwald S., Sobotzik J., Obreja O., Schmelz M., Schultz C., Mannheim (Germany)**
Detection of intraepidermal nerve fiber plasticity by anti-ankyrin-b labeling
- P17 **Schroedl F., Trost A., Bogner B., Strohmaier C., Runge C., Aigner L., Reitsamer H., Salzburg (Austria)**
Innervation pattern of ng2 positive pericytes in the rat choroid
- P18 **Shtukmaster S., Schier M., Huber-Wittmer K., Kalcheim C., Unsicker K., Freiburg, Heidelberg, Jerusalem (Israel)**
Chromaffin cells and sympathetic neurons from the sympathoadrenal cell lineage share a common progenitor
- P19 **Saburkina I., Pauziene N., Rysevaite K., Jokubauskas M., Pauza D., Kaunas (Lithuania)**
Neuroanatomy of the mouse conduction system
- P20 **Pauziene N., Rysevaite K., Jokubauskas M., Saburkina I., Pauza D., Kaunas (Lithuania)**
Electron microscopy of innervation the mouse conductive system
- P21 **Batulevicius D., Skripkiene G., Batuleviciene V., Skripka V., Rysevaite K., Pauza D., Kaunas (Lithuania)**
Regional immunohistochemistry of the frog intracardiac ganglia
- P22 **Rusu M., Jianu A., Pop F., Hostiuc S., Curca G., Bucharest and Timisoara (Romania)**
Cardiac endothelial cells label with 200 kDa neurofilaments

- P23 **Rusu M., Păduraru D., Bucharest, Iasi (Romania)**
The somatic-autonomic neural system of tongue
- P24 **Prymachuk G., Polykandriotis E., Schievenbusch S., Nierhoff D., Curth H., Odenthal M., Goeser T., Steffen H., Toex U., Neiss W., Köln, Gießen (Germany)**
Vital staining of blood vessels and bile ducts with carboxyfluorescein diacetate succinimidyl ester (cfda-se): a novel tool for isolation of cholangiocytes
- P25 **Rötzer V., Waschke J., Spindler V., München (Germany)**
Adducin modulates intercellular keratinocyte adhesion
- P26 **Stengl C., Schicht M., Heinemann F., Götz W., Scholz M., Paulsen F., Bräuer L., Erlangen, Bonn (Germany)**
Detection of surfactant proteins A, B, C and D in human gingiva and saliva
- P27 **Stoeckelhuber M., Schubert C., Kesting M., Loeffelbein D., Nieberler M., Koehler C., Welsch U., München, Buchholz (Germany)**
Human axillary apocrine glands: proteins involved in the apocrine secretory mechanism
- P28 **Müller C., Marzahn U., El Sayed K., Lohan A., Kohl B., Ertel W., John T., Schulze-Tanzil G., Berlin (Germany)**
Hybrid pig- versus göttinger minipig-derived cartilage and chondrocytes: race dependent differences in cartilage biology?
- P29 **Paliege A., Seidel S., Neymeyer H., Bachmann S., Berlin (Germany)**
Annexin a1 modulates macula densa function by inhibiting cyclooxygenase 2

- P30 **Karnati S., Lüers G., Pfriemer S., Baumgart-Vogt E., Gießen, Hamburg (Germany)**
Manganese superoxide dismutase 2 (MnSod) is not localized to peroxisomes in mammalian cells despite earlier reports in the literature
- P31 **Oruqaj G., Kotarkonda L., Karnati S., Baumgart-Vogt E., Gießen (Germany)**
Peroxisomal metabolic alterations and their possible involvement in the pathogenesis of pulmonary fibrosis
- P32 **Fan W., Qian G., Xiao Y., Karnati S., Obert M., Ahlemeyer B., Baumgart-Vogt E., Gießen (Germany)**
Peroxisomal biogenesis defects (pex13 ko) lead to interference with antioxidative, proinflammatory and PPAR signalling and disturb sirtuin regulation in bone
- P33 **Koch M., Bauer K., Tamm E., Regensburg (Germany)**
Pancortin-3 enhances substrate adhesion of podocytes and seems to play a role in Wnt-signaling
- P34 **Oehring H., Kettering M., Hilger I., Jena (Germany)**
Subcellular effects of magnetic nanoparticles in breast cancer cells in vitro
- P35 **Haque Z., Pu Q., Huang R., Bonn (Germany)**
Expression of semaphorins, plexins and neuropilins in the posterior hindbrain of chick embryos
- P36 **Kanwal N., J. Schmeisser M., Bockmann J., Boeckers T., Ulm (Germany)**
The role of Spar3 in lens and brain development
- P37 **Chankiewitz V., Bockolt K., Brand-Saberi B., Bochum (Germany)**
The transcription factor Atoh8 is involved in muscle and heart development in zebrafish

- P38 **Maurer B., Geyer S., Hieselmaier G., Weninger W., Vienna (Austria)**
Dimensions of the great intrathoracic arteries of chick embryos after the establishment of the definitive in ovo circulation
- P39 **Kweider N., Huppertz B., Wruck C., Beckmann R., Jumakuliev G., Pufe T., Kadyrov M., Aachen (Germany), Graz (Austria), Ashgabat (Turkmenistan)**
Differential expression of Nrf2 and vegf in human placental beds from normal and pregnancies from preeclampsia/iugr
- P40 **Geyer S., Maurer B., Zendron B., Weninger W., Vienna (Austria)**
Double lumen aortic arch malformation in a mouse fetus
- P41 **Geyer S., Dorn M., Maurer B., Weninger W., Vienna (Austria)**
Mouse embryos do develop a 5th pair of pharyngeal arch arteries
- P42 **Nesemann J., Scaal M., Freiburg (Germany)**
Somite patterning is independent of signals from the Wolffian duct
- P43 **Pilmane M., Fodina V., Riga (Latvia)**
Morphology in growth retarded preimplantation embryos obtained from donor oocytes

Chair: Tobias Böckers, Charlotte von Gall

- 9:00 - 9:45** 26 **Bading H., Heidelberg (Germany)**
Nuclear calcium signaling in synapse-to-nucleus communication and neuronal adaptations
- 9:45 - 10:30** 27 **Mombaerts P., Frankfurt am Main (Germany)**
Coding olfaction
- 10:30 - 10:45** 28 **Frotscher M., Studer D., Graber W., Young C., Zhao S., Hamburg, Freiburg (Germany), Bern (Switzerland)**
Remodeling of hippocampal mossy fiber synapses as revealed by high-pressure freezing
- 10:45 - 11:00** 29 **Vlachos A., Willems L., Zahn N., Scholich K., Deller T., Frankfurt am Main (Germany)**
Sphingosine-1-phosphate receptor signaling regulates denervation-induced dendritic remodeling of dentate granule cells in mouse hippocampal slice cultures

11:00 - 11:30 COFFEE BREAK

Chair: Michael Frotscher, Christian Schultz

- 11:30 - 11:45** 30 **Vogt J., Knierim E., Schuelke M., Schmitz D., Nitsch R., Mainz, Berlin (Germany)**
Mutations in the plasticity related gene PRG1 contribute to seizure susceptibility and modify the epilepsy phenotype
- 11:45 - 12:00** 31 **Prange-Kiel J., Zheng W., Halvorson L., Dallas (USA)**
GnRH regulates hippocampal aromatase expression

- 12:00 - 12:15** 32 **Zhao S., Fan I., Shao H., Chai X., Guo P., Förster E., Frotscher M., Hamburg, Freiburg (Germany), Lanzhou (China)**
Reelin induces branching of neurons and radial glial cells during corticogenesis
- 12:15 - 12:30** 33 **Jungenitz T., Al-Qaisi O., Jedlicka P., Deller T., Schwarzacher S., Frankfurt am Main (Germany)**
Functional integration of newly formed granule cells in the adult hippocampus
- 12:30 - 12:45** 34 **Vogelaar C., Krafft S., Ziegler B., Müller H., Mainz, Düsseldorf (Germany)**
An in vitro model for scar formation to study the mechanisms of scar-reducing treatments used in spinal cord injury
- 12:45 - 13:00** 35 **Pu Q., Huang R., Bonn (Germany)**
Vagus ganglion controls the ventral projection of vagus and accessory axons
- 13:00 - 13:45 LUNCH
- 13:45 - 16:00** **Poster Session II**
Atrium

Chair: Jens Waschke, Süleyman Ergün

- 16:00 - 16:15** 36 **Houdek J., Ackermann M., Gibney B., Chamoto K., Tsuda A., Mentzer S., Konerding M., Mainz (Germany), Boston MA (USA)**
Post-pneumonectomy lung tissue growth and vessel morphogenesis
- 16:15 - 16:30** 37 **Siegl S., Fragoulis A., Uhlig S., Wruck C., Aachen (Germany)**
Interplay between Nrf2 and amphiregulin: implications for ventilator induced lung injury.
- 16:30 - 16:45** 38 **Al-Sawaf O., Sönmez T., Weiß M., Keimes N., Strzelczyk E., Fragoulis A., Rosen C., Pufe T., Wruck C., Aachen (Germany)**
Nrf2 protects against tissue injury and promotes regeneration of post-ischemic skeletal muscle
- 16:45 - 17:00** 39 **Didilescu A., Nicolescu M., Pop F., Motoc A., Jianu A., Rusu M., Timisoara, Bucharest (Romania)**
Neuroendoderm - a novel paradigm?
- 17:00 - 17:15** 40 **Tohidnezhad M., Kweider N., Lippross S., Beckmann R., Varoga D., Pufe T., Aachen, Kiel (Germany)**
Platelet rich plasma (prp) induces osteoanabolic factors in human osteoblasts
- 17:15 - 17:30** 41 **Salin S., Jaeger C., Huebner W., Pufe T., Tohidnezhad M., Aachen, Kleinostheim (Germany)**
Platelet mediator concentrates (pmc): beneficial in tendon healing?

- 17:30 - 17:45** 42 **Shaheen H., Drescher W., Beckmann R., Kweider N., Ghassemi A., Pufe T., Kadyrov M., Aachen (Germany)**
Enoxaparin prevents steroid-related avascular necrosis of the femoral head.
- 17:45 - 18:00** 43 **Rusu M., Bucharest (Romania)**
Telocytes - cells or particular cell morphologies?
- 18:00 - 18:15** 44 **Brenner E., Strauß A., Glodny B., Innsbruck (Austria)**
Venous valves and their rhythm - its (non-)correlation with the heart beat and breathing
- 19:30** **Banquet at the Senckenberg Museum**

Chair: Jean-Pierre Timmermans, Thomas Pufe

- 11:30 - 11:45** 45 **Jansen S., Leib S., Podschun R., Lucius R., Pufe T., Brandenburg L., Aachen, Kiel, Bern (Switzerland)**
Induction of antimicrobial peptide psoriasin by bacterial components in glial cells
- 11:45 - 12:00** 46 **Avula L., Buckinx R., Adriaensen D., Van Nassauw L., Timmermans J., Antwerpen (Belgium)**
Involvement of mas-related gene receptor mrgd in the inflammatory response during intestinal schistosomiasis
- 12:00 - 12:15** 47 **Hempfling C., Neuhuber W., Wörl J., Erlangen (Germany)**
Serotonin immunoreactive neurons in the mouse esophagus. enteric production or extrinsic uptake?
- 12:15 - 12:30** 48 **Jabari S., da Silveira A., Neuhuber W., Brehmer A., Erlangen (Germany), Minas Gerais (Brazil)**
Massive versus moderate neurodegeneration in myenteric and submucosal plexus of human chagasic megacolon
- 12:30 - 13:00** 49 **Weber G., Weber G., Buseck (Germany)**
Drycon hpcs© - a new method for preservation and mummification of whole bodies in a closed system without formalin
- 13:00 - 13:45** LUNCH
- 13:45 - 16:00** **Poster Session II**
Atrium

Chair: Doychin Angelov, Cordian Beyer

- 16:00 - 16:15** 50 **Liebau S., Stockmann M., Boeckers T., Ulm (Germany)**
Motoneurons from human ips cells
- 16:15 - 16:30** 51 **Schmeisser M., Baumann B., Johannsen S., Jensen V., Hvalby O., Sprengel R., Oswald F., Wirth T., Boeckers T., Ulm, Heidelberg (Germany), Oslo (Norway)**
Neuronal ikk/nfkappab signaling regulates synapse formation via insulin-like growth factor 2
- 16:30 - 16:45** 52 **Gruber M., Beyer M., Grimm I., Copanaki E., Altmann C., Samanta A., Jäschke A., Weyer S., Tsankova A., Tschäpe J., Müller U., Deller T., Frankfurt am Main, Heidelberg (Germany)**
Spine densities of hippocampal neurons in vitro are regulated by ADAM-10-dependent processing of amyloid precursor protein (APP)
- 16:45 - 17:00** 53 **Braunger B., Pielmeier S., Demmer C., Landstorfer V., Kawall D., Jägle H., Fischer D., Tamm E., Regensburg, Düsseldorf (Germany)**
Tgf beta signaling protects retinal neurons from ontogenetic cell death during development
- 17:00 - 17:15** 54 **Brunkhorst R., Bock H., Haseleu J., Rizzoli S., May P., Zurhove K., Bouché E., Derouiche A., Frankfurt am Main, Freiburg, Bonn, Göttingen (Germany)**
Functional morphology of reelin-mediated glia-synaptic interaction

- 17:15 - 17:30** 55 **Fredrich M., Zeber A., Illing R., Frankfurt am Main, Freiburg (Germany)**
Functions of neuronal and glial key proteins in reorganization of the deafferented adult cochlear nucleus
- 17:30 - 17:45** 56 **Sivukhina E., Grinevich V., Jirikowski G., Jena, Heidelberg (Germany)**
Distribution of corticosteroid-binding globulin and glucocorticoid receptor-immunoreactivity in the rat brain
- 17:45 - 18:00** 57 **Caspers S., Eickhoff S., Schleicher A., Bacha-Trams M., Palomero-Gallagher N., Amunts K., Zilles K., Jülich (Germany)**
Organizational principles of the human inferior parietal lobule
- 18:00 - 18:15** 58 **Brandenburg L., Voitok M., Albrecht L., Merres J., Tauber S., Jansen S., Pufe T., Aachen (Germany)**
Involvement of proinflammatory cytokine interleukin 6 and tumor-necrosis-factor-receptor 1 in innate immune response after bacterial meningitis
- 19:30** **Banquet at the Senckenberg Museum**

- P44 **Schempf G., Wirth F., Stein G., Ankerne J., Ashrafi M., Semler J., Angelova S., Eisel L., Harrach R., Ozsoy O., Ozsoy U., Schoenau E., Angelov D., Irintchev A., Köln, Jena (Germany), Antalya (Turkey)**
Whole-body vibration exercise does not alter motor neuron excitability in spinal cord-injured rats
- P45 **Harrach R., Eisel L., Ozsoy O., Ozsoy U., Wirth F., Schempf G., Stein G., Ankerne J., Ashrafi M., Semler J., Angelova S., Schoenau E., Irintchev A., Angelov D., Köln, Jena (Germany), Antalya (Turkey)**
Manual locomotion therapy of the hind limbs fails to improve body weight support and does not alter motoneuron excitability in spinal cord-injured rats
- P46 **Masson I., Stein G., Ankerne J., Papamitsou-Sidoropolou T., Eisel L., Harrach R., Ozsoy O., Ozsoy U., Irintchev A., Angelov D., Köln, Jena (Germany), Thessaloniki (Greece), Antalya (Turkey)**
Physical rehabilitation with whole body vibration and manual locomotion fails to improve sprouting of 5-HT positive fibers after spinal cord injury in rats
- P47 **Abdulla D., Stein G., Ankerne J., Papamitsou-Sidoropolou T., Eisel L., Harrach R., Schempf G., Wirth F., Ozsoy O., Ozsoy U., Irintchev A., Angelov D., Köln, Jena (Germany), Antalya (Turkey)**
Delayed whole-body vibration therapy fails to attenuate microglial activation in the ventral horn of the chronically injured rat spinal cord

- P48 **Eisel L., Harrach R., Wirth F., Schempf G., Stein G., Ankerne J., Ashrafi M., Semler J., Angelova S., Ozsoy O., Ozsoy U., Schoenau E., Irintchev A., Angelov D., Köln, Jena (Germany), Antalya (Turkey)**
Delayed whole-body vibration therapy fails to improve hind limbs motor recovery and does not alter motoneuron excitability in spinal cord-injured rats
- P49 **Theelen M., Stein G., Angelova S., Ankerne J., Ashrafi M., Eisel L., Harrach R., Schempf G., Wirth F., Wellmann K., Ozsoy O., Ozsoy U., Angelov D., Köln (Germany), Antalya (Turkey)**
Proper post-operative care and regular bladder voiding after spinal cord injury prevents urinary retention in the kidneys and allows intensive therapeutical approaches
- P50 **Wolfsdorff N., Ozsoy O., Ozsoy U., Stein G., Schempf G., Wirth F., Angelova S., Ankerne J., Ashrafi M., Semler J., Schoenau E., Papamitsou-Sidoropolou T., Irintchev A.(8), Dunlop S.(9), Angelov D., Köln, Jena (Germany), Antalya (Turkey), Thessaloniki (Greece), Crawley (Australia)**
Functional deficits and morphological alterations of the neurogenic bladder are proportional to the severity of spinal cord compression
- P51 **Wirth F., Schempf G., Stein G., Ankerne J., Ashrafi M., Semler J., Angelova S., Eisel L., Harrach R., Ozsoy O., Ozsoy U., Schoenau E., Angelov D., Irintchev A., Köln, Jena (Germany), Antalya (Turkey)**
Whole-body vibration exercise improves body weight support and bladder function in spinal cord-injured rats

- P52 **Schwarz A., Stein G., Semler J., Ankerne J., Ashrafi M., Eisel L., Harrach R., Schempf G., Wirth F., Ozsoy O., Ozsoy U., Schoenau E., Irintchev A., Angelov D., Köln (Germany), Antalya (Turkey)**
Recovery of locomotion after compressive spinal cord injury in rats correlates with coordinated muscle activity but not with muscle atrophy
- P53 **Sarikcioglu L., Hizay A., Ozsoy U., Demirel B., Ozsoy O., Angelova S., Ankerne J., Bilmen Sarikcioglu S., Dunlop S., Angelov D., Köln (Germany), Antalya (Turkey), Perth (Australia)**
Aorta-y-tube-conduit to study axonal regrowth after facial nerve injury
- P54 **Pick C., Stein G., Semler J., Ankerne J., Ashrafi M., Eisel L., Harrach R., Schempf G., Wirth F., Ozsoy O., Ozsoy U., Schoenau E., Irintchev A., Angelov D., Koebke J., Köln, Jena (Germany), Antalya (Turkey)**
Changes in the femoral cortical thickness after compressive spinal cord injury and whole body vibration in rats
- P55 **Salin E., Tohidnezhad M., Pufe T., Aachen (Germany)**
Effect of platelet-released growth factors on tendon healing, an in vitro study
- P56 **Houben A., Beckmann R., Dietz-Laursonn K., Wruck C., Tohidnezhad M., De la Fuente M., Pufe T., Aachen (Germany)**
Mechanical load increases Vegf and decreases Sflt-1 expression in chondrocytes

- P57 **Jianu A., Didilescu A., Manoiu V., Rusu M., Timisoara, Bucharest (Romania)**
Thymic epithelial remodeling is supported by a particular structure of desmosomes
- P58 **Jianu A., Motoc A., Pop F., Hostiuc S., Curca G., Rusu M., Timisoara, Bucharest (Romania)**
Cardiac networks of c-kit -positive cells
- P59 **Rusu M., Paulsen F., Hostiuc S., Erlangen (Germany), Bucharest (Romania)**
Lingual telocytes and networks of telocytes
- P60 **Schumann S., Essen (Germany)**
Vasculogenic zone is impaired in klotho gene deficient mice
- P61 **Becker D., Deller T., Vlachos A., Frankfurt am Main (Germany)**
Tumor necrosis factor alpha maintains the denervation-induced compensatory increase in excitatory synaptic strength of dentate granule cells in mouse hippocampal slice cultures
- P62 **Kim M., Maronde E., Rami A., Frankfurt am Main (Germany)**
Alleviation of autophagy by Knockdown of Beclin-1 enhances susceptibility of hippocampal neurons to proapoptotic signals induced by amino acid starvation

- P63 **Kuzminienė A., Šalomskaitė-Davalgienė S., Balnytė I., Palubinskienė J., Valančiūtė A., Ulozas V., Kaunas (Lithuania)**
Morphological changes of chicken chorioallantoic membrane with different laryngeal tumor onplants
- P64 **Tektas O., Hirt R., Carrington S., Arnett R., FitzPatrick E., Paulsen F., Erlangen, Dessau (Germany), Dublin (Ireland)**
Comparative anatomy of the human and canine efferent tear duct system - impact of mucin muc5ac on lacrimal drainage
- P65 **Valdovska A., Pilmane M., Zitare I., Jemeljanovs A., Jelgava, Riga, Sigulda (Latvia)**
Morphofunctional changes in the intestine of pigs fed with jerusalem artichoke
- P66 **Hampel U., Iserovich P., Sesselmann S., Sel S., Paulsen F., Sack R., Erlangen, Halle (Germany), New York (USA)**
Chemokine and cytokine levels in osteoarthritis and rheumatoid arthritis synovial fluid
- P67 **Hoffmann K., Garreis F., Paulsen F., Scholz M., Erlangen (Germany)**
Characterization of osteopontin (OPN) expression and associated receptor proteins in human conjunctiva and cornea epithel cells under normal in vitro conditions
- P68 **Wild K., Jahn J., Paulsen F., Garreis F., Erlangen, Halle (Germany)**
S100 fused-type protein hornerin and filaggrin-2 - expression and function at the ocular surface

- P69 **Wenger M., Shved N., Akgül G., Nakayama-Casanova A., Segner H., Eppler E., Zurich, Bern (Switzerland)**
Estrogen effects on the GH/IGF-system and on cytokines in immune organs of yersinia -exposed rainbow trout (*Oncorhynchus mykiss*)
- P70 **Soultanova A., Mikulski Z., Pfeil U., Kummer W., Gießen (Germany)**
CGRP, adrenomedullin and intermedin attenuate inflammation and pathogen clearance by alveolar macrophages
- P71 **Pilmane M., Valdovska A., Riga (Latvia)**
Characterization of cytokines expression in the adhesions with and without inflammation
- P72 **Wulf J., Rohde I., Koppe T., Winder J., Hamburg, Greifswald (Germany), Newtownabbey (United Kingdom)**
Micro-computed tomography based physical anatomical teaching models: presentation of a new learning aid for routine use in anatomy lectures
- P73 **Eppler E., Filgueira L., Zurich (Switzerland), Perth (Australia)**
Integration of anatomy, literature research skills and clinical practice through a peer-teaching and peer-assessment exercise at pre-clinical level in an undergraduate medical course
- P74 **Frandes C., Sferdian M., Arad (Romania)**
Volumetric measurement of the femoral head using direct and imagistic methods

- P75 **Winkelmann A., Koel-Abt K., Seethaler N., Stoecker H., Kunst B., Schnalke T., Berlin (Germany)**
Skulls with a colonial past - first results of the Charité human remains project
- P76 **Knepper R., Barth T., Schierz O., Löffler S., Leipzig (Germany)**
Comparison between clinical op situations and human dissected specimen
- P77 **Dräger D., Branski R., Sulica L., Wree A., Rostock (Germany), New York (USA)**
Contributions of Rostock to the otolaryngology at the beginning of the 20th century - the description of Reinke space
- P78 **Cotofana S., Salzburg (Austria)**
Longitudinal changes in cartilage thickness in knees with osteophytes but no joint space narrowing versus contralateral knees without radiographic oa
- P79 **Motoc A., Folescu R., Stana L., Petrescu C., Ilie C., Sisu A., Timisoara (Romania)**
The heart arterial orifices - biometric study
- P80 **Motoc A., Stana L., Folescu R., Moise M., Sisu A., Timisoara (Romania)**
Cephalometric parameters in peri-puberty-aspects of sexual dymorphism
- P81 **Grundmann U., Grundmann A., Mayen (Germany)**
Long axis longitude of the total left heart

- P82 **Wächter J., Faerber G., Schwarzer M., Fitzl G., Leipzig (Germany)**
Induction of heart failure by minimally invasive aortic constriction in mice: a morphological study
- P83 **Jankovic R., Parapid B., Aleksandric S., Nedeljkovic I., Beleslin B., Simic D., Teofilovski M., Teofilovski-Parapid G., Belgrade (Serbia)**
Myocardial bridging of left anterior descending coronary artery - a risk factor for myocardial ischemia?
- P84 **Stana L., Sisu A., Jianu A., Ilie C., Grigorita L., Enache A., Timisoara (Romania)**
On the cerebral blood supply- arterial variability in elements
- P85 **Valanciute A., Gudiene D., Pangonyte D., Ingrida B., Kaunas (Lithuania)**
Morphological changes of elastic fibers of basilar artery in aging
- P86 **Rusu M., Pop F., Bucharest (Romania)**
Adult leptomenigeal cerebellar heterotopia compressing the posterior inferior cerebellar artery
- P87 **Indrei A., Dumitrescu G., Hodorog D., Prodan R., Haba D., Iasi (Romania)**
Fahr syndrome associated with brain stem calcification: a radiological, clinical and histopathological study
- P88 **Pop E., Folescu R., Bolintineanu S., Petrescu C., Motoc A., Sisu A., Timisoara (Romania)**
Superior obliquus muscle paralysis due to trochlear nerve trauma

- P89 **Pop E., Folescu R., Bolintineanu S., Motoc A., Sisu A., Sargan I., Petrescu C., Timisoara (Romania)**
Injury of the oculomotor nerve in craniocerebral trauma
- P90 **Dydykin S., Kuzmichev V., Nikolaev A., Mazurin V., Bogoyavlenskaya T., Moscow (Russia)**
Peculiarities of topographical anatomy of steno-cartilage section of thoracic wall in thorascopic access to deep thoracic arteries
- P91 **Barsan N., Bordei P., Craciun A., Iliescu D., Constanta (Romania)**
Hepatic arteries originating from the aorta and the superior mesenteric artery
- P92 **Bordei P., Cobzariu A., Craciun A., Iliescu D., Constanta (Romania)**
Morphology of the middle colic arteries
- P93 **Folescu R., Pop E., Petrescu C., Sargan I., Haivas C., Samfirescu E., Motoc A., Sisu A., Timisoara (Romania)**
Pancreatic arterial supply- anatomical data
- P94 **Folescu R., Pop E., Stana L., Stancu G., Motoc A., Rusu M., Zamfir C., Sisu A., Timisoara, Bucharest and Iasi (Romania)**
Types and variations in origin of the parietal branches of internal iliac artery
- P95 **Leksan I., Istvanic T., Selthofer R., Brkic H., Radic R., Osijek (Croatia)**
The influence of type of vascular anastomosis on postoperative haemodynamics - computer simulation method

- P96 **Sisu A., Stana L., Folescu R., Petrescu C., Pop E., Moise M., Stancu G., Motoc A., Timisoara (Romania)**
On the etiology and clinical issues of the piriformis syndrome
- P97 **Didilescu A., Rusu M., Sandulescu M., Ciuluvica R., Bucharest (Romania)**
The topography and shape of the mandibular canal in edentulous patients
- P98 **Didilescu A., Ciuluvica R., Sandulescu M., Rusu M., Bucharest (Romania)**
Morphometric anatomy of the relationships between the upper first molar and maxillary sinus floor
- P99 **Nimigean V., Nimigean V., Moraru S., Bucharest (Romania)**
The biological aspects of the soft tissue around a dental implant: a study on dogs
- P100 **Nimigean V., Nimigean V., Salavastru D., Bucharest (Romania)**
Alveolar maxillary defect: clinical management
- P101 **Sapte E., Stefanescu C., Tomis (Romania)**
Morphological analysis of the palatine ridges
- P102 **Sisu A., Petrescu C., Stana L., Folescu R., Pop E., Motoc A., Timisoara (Romania)**
Scapulohumeral joint ligaments- variability of morphofunctional parameters

- P103 **Stana L., Sisu A., Moise M., Folescu R., Selaru M., Motoc A., Timisoara (Romania)**
Synovial cyst in popliteal fossa- incidence, clinical anatomy and differential diagnosis
- P104 **Moscu M., Fatu Vascu A., Vascu B., Fatu I., Haliciu Cefalan A., Iasi (Romania)**
Correlation between the Ki 67 proliferation index and angiogenesis in endometrial cancer
- P105 **Radu A., Frandes C., Arad (Romania)**
The immunohistochemical study of the vascular structures in the malignant tumoral pathology of the uterus
- P106 **Fatu C., Fatu I., Fatu Vascu A., Vascu M., Haliciu Cefalan A., Moscu M., Iasi (Romania)**
Role of scintigraphy in the diagnosis of endometrial cancer
- P107 **Shved N., Haas C., Warinner C., Papageorgopoulou C., Rühli F., Zurich (Switzerland)**
DNA preservation under experimental human tissue mummification

Chair: Thomas Deller, Jörg Wilting

- | | | |
|---------------|----|--|
| 09:00 - 09:45 | 59 | Misgeld T., Munich (Germany)
Imaging axonal recovery in the spinal cord |
| 09:45 - 10:30 | 60 | Acker-Palmer A., Frankfurt am Main (Germany)
Neuronal and vascular guidance |
| 10:30 - 10:45 | 61 | Piatkowski T., Mühlfeld C., Braun T., Borchardt T., Bad Nauheim, Hannover (Germany)
Regeneration of the newt heart: structural reconstitution is accomplished by dedifferentiation, proliferation and migration of cardiac cells |
| 10:45 - 11:00 | 62 | Krusche C., Krull P., Kant S., Denecke B., Leube R., Aachen (Germany)
Desmoglein 2 mutant mice show a distinct sequence of myocardial alterations from adolescence to adulthood |
| 11:00-11:30 | | COFFEE BREAK |

Chair: Ernst Tamm, Sebastian Bachmann

- 11:30 - 11:45** 63 **Kant S., Krusche C., Eisner S., Leube R., Aachen (Germany)**
Desmoglein 2 mutant mice lack typical desmosome-like structures and develop changes in actin expression and localization
- 11:45 - 12:00** 64 **Beckmann R., Janzen N., Raupach K., Pufe T., Fischer H., Aachen (Germany)**
Sodiumnitrit/pdlla coating could enhance angiogenesis and remodelling of â-tcp scaffolds
- 12:00 - 12:15** 65 **Ackermann M., Erba P., Orgill D., Konerding M. Mainz (Germany), Boston MA (USA)**
Improvement of wound healing by boosting angiogenesis: studies in normoglycemic and diabetic mice
- 12:15 - 12:30** 66 **Becker J., Wilting J., Göttingen (Germany)**
The new lymphangiogenesis inhibitor esvegfr2 is expressed in embryonic tissues and down-regulated in advanced stage neuroblastoma
- 12:30 - 12:45** 67 **Buttler K., Pukrop T., Wilting J., Göttingen (Germany)**
Wnt5a-knock-out mice possess modified morphology of dermal lymphatic vessels
- 12:45 - 13:00** 68 **Schellenberg T., Fragoulis A., Streetz K., Rosen C., Pufe T., Wruck C., Aachen (Germany)**
Nrf2 protects hepatocytes against oxidative liver injury and has a role in liver regeneration via stem cell activation
- 13:00** **Closing Ceremony and Poster Awards**
- 13:30** **LUNCH**

Chair: Jean-Pierre Timmermans, Thomas Pufe

- 11:30 - 11:45** 69 **Spittau B., Pfeifer D., Kriegelstein K., Freiburg (Germany)**
Gene expression profile of transforming growth factor-beta1 treated primary microglia
- 11:45 - 12:00** 70 **Kipp M., Berger K., Amor S., Harald N., Beyer C., Aachen, Bonn (Germany), Amsterdam (Netherlands)**
Oligodendrocyte-derived cxcl10 in multiple sclerosis lesion formation
- 12:00 - 12:15** 71 **Rosen C., Hilverling A., Fragoulis A., Dijkstra C., Beyer C., Kipp M., Pufe T., Wruck C., Aachen (Germany), Amsterdam (Netherlands)**
The role of Nrf2 in myelin phagocytosis
- 12:15 - 12:30** 72 **Clarner T., Parabucki A., Beyer C., Kipp M., Aachen (Germany), Belgrade (Serbia)**
Corticosteroids impair remyelination in the corpus callosum of cuprizone-treated mice
- 13:00** **Closing Ceremony and Poster Awards**
Lecture Hall 3
- 13:30** LUNCH

Alphabetical List of First Authors of Lectures and Posters

First Author	Number of lectures (L) and posters (P)
Abdulla	P47
Ackermann	L65
Acker-Palmer	L60
Ahlemeyer	L22
Al-Sawaf	L38
Avula	L46
Bading	L26
Barsan	P91
Batulevicius	P21
Becker D.	P61
Becker J.	L66
Beckmann	L64
Berishvili	P3
Bordei	P92
Brandenburg	L58
Braunger	L53
Brenner	L44
Brunkhorst	L54
Buck	L19
Buttler	L67
Caspers	L57

Alphabetical List of First Authors of Lectures and Posters

First Author	Number of lectures (L) and posters (P)
Chankiewitz	P37
Clarner	L72
Cotofana	P78
Cuntz	P12
Didilescu	L39 P97 P98
Dräger	P15 P77
Dydykin	P90
Eiberger	P10
Eisel	P48
Eppler	P73
Fan	P32
Fatu	P106
Fischer	P2
Folescu	P93 P94
Foster	L2
Fragoulis	L21
Frandes	P74
Fredrich	L55
Frotscher	L28
Fuchshofer	L12
Gall, von	L5

Alphabetical List of First Authors of Lectures and Posters

First Author	Number of lectures (L) and posters (P)
Geyer	P40 P41
Gromann	P16
Gruber	L52
Grundmann	P81
Hampel	P66
Haque	P35
Harrach	P45
Hartlieb	L11
Hempfling	L47
Hölter	L9
Hoffmann	P67
Houben	P56
Houdek	L36
Indrei	P87
Jabari	L48
Jankovic	P83
Jansen	L45
Jedlicka	P13
Jianu	P57 P58
Jungenitz	L33
Kant	L63

Alphabetical List of First Authors of Lectures and Posters

First Author	Number of lectures (L) and posters (P)
Kanwal	P36
Karnati	P30
Kim	P62
Kipp	L70
Knepper	P76
Koch	P33
Kröher	P5
Krusche	L62
Kunst	L8
Kuzminiené	P63
Kweider	L18 P39
Leksan	P95
Liebau	L50
Maronde	L10
Masson	P46
Maurer	P38
Misgeld	L59
Mombaerts	L27
Moscu	P104
Motoc	P79 P80
Müller	P28

Alphabetical List of First Authors of Lectures and Posters

First Author	Number of lectures (L) and posters (P)
Namm	P8
Nesemann	P42
Nimigean	P99 P100
Noichl	P1
Oehring	P34
Ohlmann	P9
Oruqaj	P31
Paliege	P29
Pauziene	P20
Paysan	L16
Pfeffer	L7
Piatkowski	L61
Pick	P54
Pilmane	P43 P71
Pop	P88 P89
Prange-Kiel	L31
Pröls	L17
Pryymachuk	P24
Pu	L35
Rawashdeh	L3
Radu	P105

Alphabetical List of First Authors of Lectures and Posters

First Author	Number of lectures (L) and posters (P)
Röschel	L14
Rötzer	P25
Rosen	L71
Rüb	L23
Rudolph	L24
Rune	L4
Rusu	L43 P22 P23 P59 P86
Saburkina	P19
Salin	L41 P55
Sapte	P101
Sarikcioglu	P53
Saritas	L13
Schellenberg	L68
Schempf	P44
Schmeisser	L51
Schomerus	P4
Schroedl	P17
Schütz	L25
Schumann	P60
Schwarz	P52
Shaheen	L42

Alphabetical List of First Authors of Lectures and Posters

First Author	Number of lectures (L) and posters (P)
Shtukmaster	P18
Shved	P107
Siegl	L37
Singer	L15
Sisu	P96 P102
Sivukhina	L56
Soultanova	P70
Spittau	L69
Stammler	L20
Stana	P84 P103
Stengl	P26
Stoeckelhuber	P27
Takahashi	L1
Tektas	P64
Theelen	P49
Tohidnezhad	L40
Valanciute	P85
Valdovska	P65
Vlachos	L29
Vnencak	P11
Vogelaar	L34

Alphabetical List of First Authors of Lectures and Posters

First Author	Number of lectures (L) and posters (P)
Vogt	L30
Wächter	P82
Weber	L49
Weiland	P14
Wenger	P69
Wild	P68
Winkelmann	P75
Wirth	P51
Wittenmayer	P7
Wolfsdorff	P50
Wulf	P72
Yasuo	L6
Zamfir	P6
Zhao	L32

General information

President of the Anatomische Gesellschaft

Prof. Dr. med. Tobias M. Böckers
Institut für Anatomie und Zellbiologie
Universität Ulm
Albert-Einstein-Allee 11
89069 Ulm

Phone +49 (0)731 500-23221
Fax +49 (0)731 500-232179
Tobias.Boeckers@uni-ulm.de

Secretary of the Anatomische Gesellschaft

Prof. Dr. med. Friedrich Paulsen
Institut für Anatomie II
Universität Erlangen-Nürnberg
Universitätsstraße 19
91054 Erlangen

Tel +49 (0)9131 8522865
Fax +49 (0)9131 8522862
Friedrich.Paulsen@anatomie2.med.uni-erlangen.de

Local Scientific Organization

Prof. Dr. med. Thomas Deller
Dr. Senckenbergische Anatomie - Anatomie I
Phone +49 (0)69 6301-6900
Fax +49 (0)69 6301-6425
T.Deller@em.uni-frankfurt.de

Prof. Dr. med. Horst-Werner Korf
Dr. Senckenbergische Anatomie - Anatomie II
Phone +49 (0)69 6301-7425
Fax +49 (0)69 6301-6017
Korf@em.uni-frankfurt.de

General information

Prof. Dr. rer.nat. Jörg Stehle
Dr. Senckenbergische Anatomie - Anatomie III
Tel +49 (0)69 6301-6905
Fax +49 (0)69 6301-6920
Stehle@em.uni-frankfurt.de

Goethe-Universität Frankfurt am Main
Theodor-Stern Kai 7
60590 Frankfurt am Main

Local Organization

All members of the Dr. Senckenbergische Anatomie

Correspondence and Meeting Secretaries

Dorothea von Meltzer, Martina Hütten
Dr. Senckenbergische Anatomie
Goethe-Universität Frankfurt am Main
Theodor-Stern Kai 7
60590 Frankfurt am Main
Phone | Fax +49 (0)69 6301-7425 | -6017
D.vonMeltzer@em.uni-frankfurt.de

Congress Venue and Lecture Halls

Goethe-Universität
Campus Westend | Lecture Hall
Grüneburgplatz 1
60323 Frankfurt am Main

Meeting Office - Registration Desk

Lecture Hall | Atrium

Friday, March 23	08:00 - 18:30
Saturday, March 24	08:00 - 18:30
Sunday, March 25	08:00 - 18:30
Monday, March 26	08:00 - 14:00

General information

Registration Fees

Members of the Anatomische Gesellschaft	150 €
Non-members	200 €
Students	75 €
Lunch buffett, per day	10 €

Oral Presentation

The official congress language is English. We would like to ask all speakers to respect the designated time schedule. If your session is in the morning, please submit your presentation the **preceding evening**. All speakers are kindly asked to provide their presentation as Powerpoint data on an USB-Stick, and to hand it over to the registration desk in the Atrium of the Lecture Hall at least **one hour** before the beginning of the session. Audio visual equipment (Windows PC with USB-port and video beamer) is installed in the lecture hall. Presentation software is Windows Power Point.

Abstracts

Abstracts of all submitted contributions will be published online on the homepage of the Anatomische Gesellschaft as pdf-files:

www.anatomische-gesellschaft.de

Poster Sessions

Posters will be presented in the Atrium of the Lecture Hall. Thumbtacks for poster mounting will be at the registration desk. Please mount your poster well before the poster session. All posters can be on display throughout the meeting.

Maximum Poster Size is A0

90 x 130 cm portrait format - not landscape

The poster committee will evaluate the posters for the poster prizes at the time of the authors' presence.

Poster Prize

The Anatomische Gesellschaft awards four poster prizes during the 107th Annual Meeting of the Anatomische Gesellschaft in Frankfurt 2012. The poster awards are kindly sponsored by Schattauer, Munich.

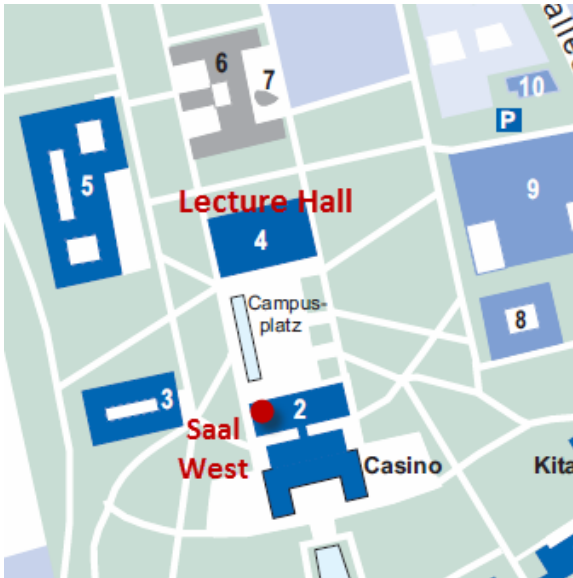
General information

Industrial exhibition

The exhibition is located in the Atrium of the Lecture Hall and will be open throughout the meeting.

Coffee Breaks and Lunch

Coffee breaks will be offered in the Atrium of the Lecture Hall.
Lunch will be offered at Saal West (please see the map below).



General Assembly (Mitgliederversammlung) of the Anatomische Gesellschaft

Sunday, March 25, 2012, 17:00 - 19:00

General information

How to reach the Goethe-University, Campus Westend

From Frankfurt main station

- 1 Bus routes 36 stop directly in front of the University.
- 2 Take the underground line U4 (direction *Enkheim*) or U5 (direction *Preungesheim*) to *Willy-Brandt-Platz*, then underground line U1 (direction *Ginnheim*) / U2 (direction *Nieder-Eschbach* or *Bad Homburg*) / U3 (*Oberursel-Hohemark*) / U8 (*Riedberg*) to *Holzhausenstraße*. Then walk the remaining short distance to the Lecture Hall in 5 minutes (please see the map below).
- 3 Take line S1 / 2 / 3 / 4 / 5 / 6 / 8 / 9 to *Konstablerwache*, then bus No. 36 (direction *Westbahnhof*) to *Simon-Bolivar-Anlage*.



General information

From Frankfurt Airport

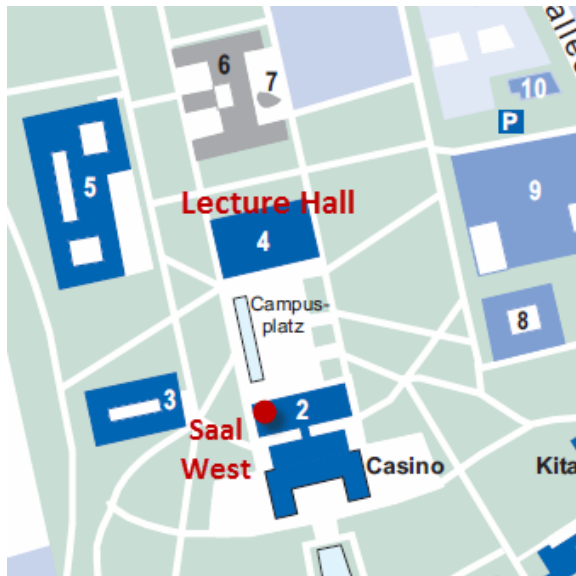
- 1 The drive to the Goethe-University is about 20 to 30 minutes by taxi.
Cost: 20-30 €.
- 2 Take line S8 / 9 (direction *Offenbach Ost* or *Hanau Hbf*) to *Konstablerwache*, then bus No. 36 (direction *Westbahnhof*) to *Simon-Bolivar-Anlage*.
- 3 Take line S8 / 9 (direction *Offenbach Ost* or *Hanau Hbf*) to Frankfurt main station, then take the underground line U4 (direction *Enkheim*) or U5 (direction *Preungesheim*) to *Willy-Brandt-Platz*, then underground line U1 (direction *Ginnheim*) / U2 (direction *Nieder-Eschbach* or *Bad Homburg*) / U3 (*Oberursel-Hohemark*) / U8 (*Riedberg*) to *Holzhausenstraße*.
Then walk the remaining short distance to the Lecture Hall in 5 minutes.

Social Program

Opening Ceremony and Get-Together Party

Friday, March 23, 18:00

Saal West (please see the map below)



Reception by the Lord Mayor in the Kaisersaal of the Römer

Saturday, March 24, 19:30 - 22:30

Departure: 19:00

Banquet at the Senckenberg Museum

Sunday, March 25, 19:30

Departure: 19:00

Fee: 70 €

Sponsors

Industrial Exhibitors and Sponsors of the Annual Meeting

Elsevier, München/Berlin

Medis-Medical Technology, Buseck

Leica, Wetzlar

Schattauer, München

Somso, Coburg

Zeiss, Oberkochen/Jena

Sponsors of the Leopoldina-Symposium

Deutsche Forschungsgemeinschaft, Bonn

Dr. Senckenbergische Stiftung, Frankfurt am Main

Mundipharma, Limburg

Nationale Akademie der Wissenschaften Leopoldina, Halle

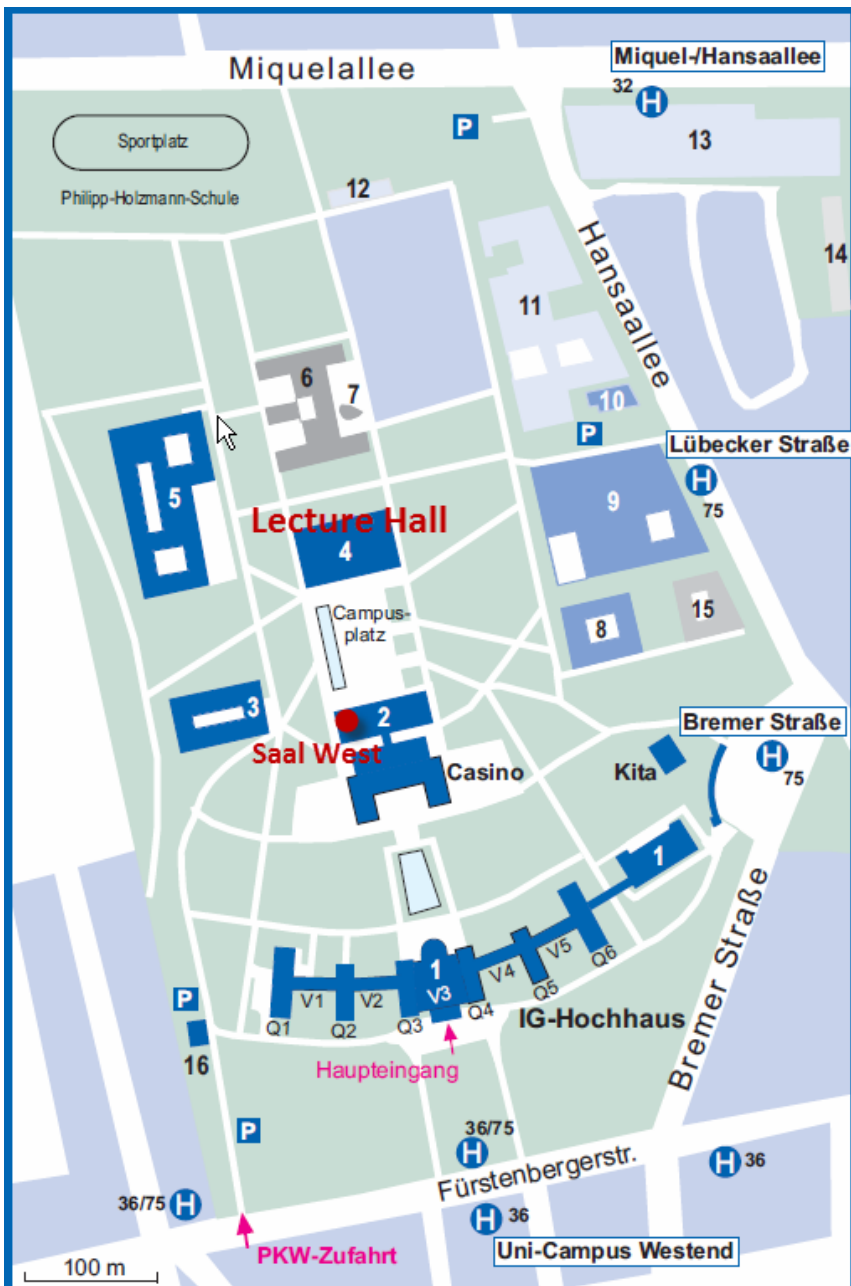
Sanofi, Frankfurt am Main

Servier, München

Vereinigung von Freunden und Förderern der Goethe-Universität, Frankfurt am Main

Cover

„Body of Knowledge” sculpture by Jaurne Plensa, Campus Westend, donated by Johanna Quandt



107th Annual Meeting | Overview

Day	Hours	Lecture Hall 3	Hours	Lecture Hall 4	Atrium	Social Program
Friday March 23	09:00 - 17:30 18:00	Leopoldina-Symposium Opening Ceremony of the 107. Annual Meeting				20:00 Get-Together Party Saal West
Saturday March 24	09:00 - 13:00 13:45 - 15:15 15:15 - 17:00 17:00 - 19:00	Leopoldina-Symposium Main Topic I - Cell Biology General Assembly	12:00 - 13:00 13:45 - 15:15 15:15 - 16:30	Reproductive Biology - Neuroregeneration and Neurodegeneration -	Poster Session I	19:30 - 22:30 Reception by the Lord Mayor in the Kaisersaal of the Römer
Sunday March 25	09:00 - 13:00 13:45 - 16:00 16:00 - 18:15	Main Topic II - Main Topic II	11:30 - 13:00 13:45 - 16:00 16:00 - 18:15	Neuroimmunology Auton. Nervous System Gross Anatomy - Main Topic II Neuroanatomy	Poster Session II	19:30 Banquet at the Senckenberg Museum
Monday March 26	09:00 - 13:00 13:00 - 13:30	Main Topic II Closing Ceremony	11:30 - 12:30	Neuroimmunology		